



# phoebe

## SHRUG

Stripped down to just a handful of pentagons, this construction creates the tightest shoulder-hugging shrug. The ribbed trim helps keep the motif edges snug against the body and makes Phoebe upside-downable. Yes, it's complicated, but so very cute (and quick) that you might find yourself making more than one.

### skill level

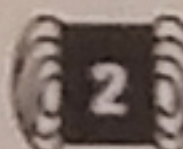
EXPERIENCED ● ● ●

### Size

XS/S (M/L); sample shown is size XS/S

Finished width at underarm 20 (23)" (51 [58.5] cm); length, total at center back 11½ (13½)" (29.5 [34.5]cm)

### Materials

Misti Alpaca Tonos Pima Silk, 83% pima cotton, 17% silk, 3½ oz (100g), 327 yd (300m)  Fine

1 (2) hanks in TPS11 Berry Rich

U.S. Size 7 (4.5mm) crochet hook or size needed to obtain gauge

Stitch markers

### Gauge

In ribbing of band, 16 hdc = 4" (10cm); 6 rows = 2" (5cm)

### For Size XS/S

#### Carina Minor Pent Motif

RND 1: 1½" (3.8cm)

RND 2: 2¾" (7cm) widest point

RND 5: one side, point to point = 3½" (9cm); height = 6" (15cm); widest point = 6½" (16.5cm)

### For Size M/L

#### Carina Major Pent Motif

RND 1: 1½" (3.8cm)

RND 2: 2¾" (7cm) widest point

RND 6: one side, point to point = 4½" (11.5cm); height = 7" (18cm); widest point = 7½" (19cm)

Please see Measuring Motifs (page 35).

### Stitch Definitions

See instructions for individual Carina motifs (page 25).

For more motif assembly information, see Universal Assembly (page 33).

### Pattern Notes

I rarely approve of how variegated yarns behave in lace crochet or in lacy motifs. High-contrast color changes can detract from your lovely stitchwork. However, many tonal yarns, those with subtly shifting shades throughout a related range of colors, can bring breathtaking depth to lace. This yarn is particularly noteworthy for the way in which the silk and cotton take on color so brilliantly.

## Working with Half Double Crochet (hdc) Ribbing

For a beautiful ribbed texture but very little compression, I love half double crochet made in the front loop only (hdc through the front loop only). The wrong side of hdc has a unique feature among standard crochet stitches, an extra horizontal strand that lies below the top loops of the stitch. The front loop of the half double crochet is the strand on top of the row, *not* this extra strand just below.

**HDC THROUGH THE FRONT LOOP ONLY:** YO, insert the hook in the front loop only of the next stitch, YO and draw up a loop, YO and draw through all 3 loops on the hook.

**BEG HDC:** Begin a row of hdc with an actual stitch in the first hdc, a stitch that is linked to the ch-2 turning chain. Ch 2, insert the hook in the 2nd ch from the hook, YO and draw up a loop, insert the hook in the first hdc, YO and draw up a loop, YO and draw through all 3 loops on the hook.

### Instructions

Size XS/S uses Carina minor pents.

Size M/L uses Carina major pents.

*The first 8 motifs are assembled in a curved course. But there are two odd connections between the outer points of Motifs 4 and 1, and between the outer points of Motifs 5 and 8.*

Make 11 Carina pent motifs, connecting to one another as you go while crocheting the last round according to the assembly diagram.

**MOTIFS 1-3:** Assemble 3 pents in a curved row, connected completely to one another, with one flat side of each at the inside of curve and a free point of each at the outer curve.

**MOTIF 4:** Add to the curved assembly the same as previous motifs, except join the outer point sp to the free outer point sp of Motif 1. Fold over Motif 3 at the shoulder line to make this possible.

**MOTIFS 5-7:** Add to the curved assembly the same as previous motifs.

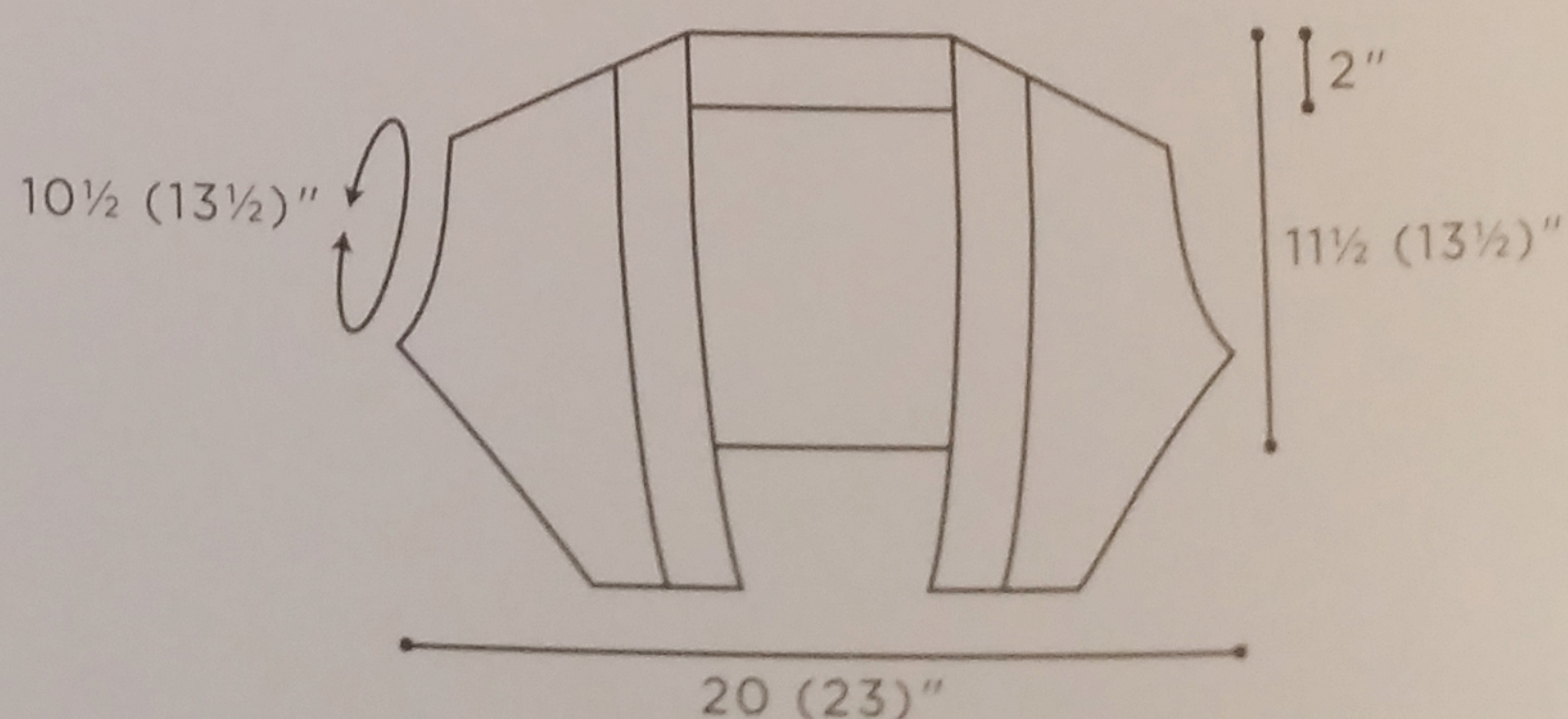
**MOTIF 8:** Add to the curved assembly the same as previous motifs, except join the outer point sp to the free outer point sp of Motif 5. Fold over Motif 6 at the shoulder line to make this possible.

**MOTIF 9:** Join the first point sp to the outer free point sp of Motif 3; connect the next 2 (3) side sps to Motif 3. Join the next point sp to the join between Motifs 3 and 4, then con-

nect the next 2 (3) side sps to Motif 4. Join the next point sp to the join between Motifs 1 and 4, and then connect the next 2 (3) side sps to Motif 1. Join the next point sp to the join between Motifs 1 and 2, and then connect the next 2 (3) side sps to Motif 2. Join the last point sp to the outer free point sp of Motif 2. Finish the rest of the motif.

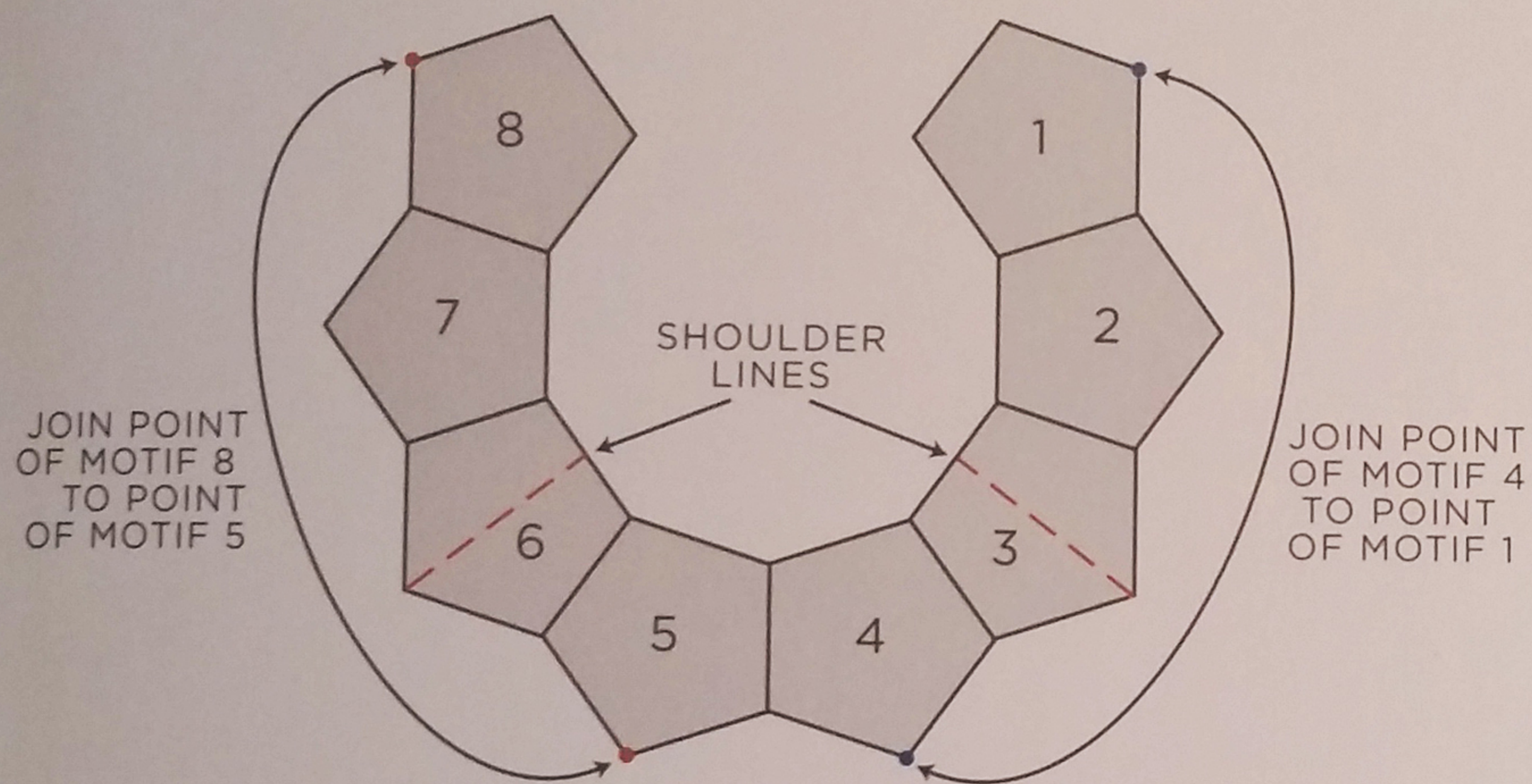
**MOTIF 10:** Join first point sp to the outer free point sp of Motif 7, then connect the next 2 (3) side sps to Motif 7. Join the next point sp to the join between Motifs 7 and 8, then connect the next 2 (3) side sps to Motif 8. Join the next point sp to the join between Motifs 5 and 8, then connect the next 2 (3) side sps to Motif 5. Join the next point sp to the join between Motifs 5 and 6, then connect the next 2 (3) side sps to Motif 6. Join the last point sp to the outer free point sp of Motif 6, and finish the rest of the motif.

**MOTIF 11:** Join the first point sp to the next free point sp of Motif 1, then connect the next 2 (3) side sps to Motif 1. Join the next point sp to the join between Motifs 1 and 4 (yes,

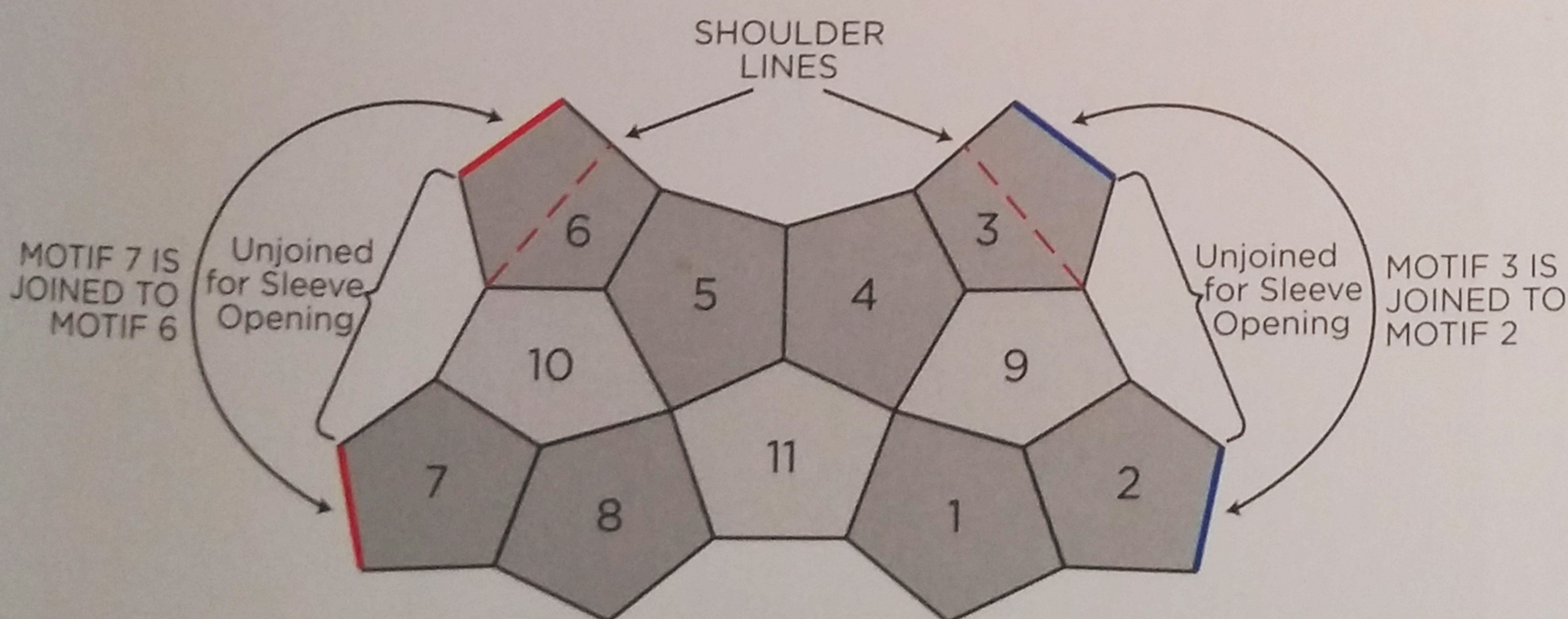




### ASSEMBLY DIAGRAM



WHILE JOINING MOTIFS 1 THROUGH 8 IN A SEMICIRCLE AS SHOWN, JOIN AT POINTS AS INDICATED



JOIN MOTIF 9 TO 3, 4, 1, AND 2;  
JOIN MOTIF 10 TO 7, 8, 5, AND 6;  
JOIN MOTIF 11 TO 1, 4, 5, AND 8

there are four points here), then connect the next 2 (3) side sps to Motif 4. Join the next point sp to the join between Motifs 4 and 5, then connect the next 2 (3) side sps to Motif 5. Join the next point sp to the join between Motifs 5 and 8, then connect the next 2 (3) side sps to Motif 8. Join the last point sp to the next free point sp of Motif 8, and finish the rest of the motif.

### Band

Finish the inner curve of the front neckline (the one flat side each of Motifs 1-8) and add a wide band.

With the right side of the front edge facing, join yarn with sl st in the remaining free point sp of Motif 8 at one end of the inner curve.

**ROW 1 (RS):** Ch 1, [sc, ch 4, sc] in the same sp; \*[ch 4, sc in the next ch-4 sp] 2 (3) times; ch 4, sc in the next partial ch-sp before the join of the motifs; ch 4, sc in the next partial ch-sp after the join of motifs\*; repeat from \* to \* 6 times; [ch 4, sc in next ch-4 sp] 2 (3) times; ch 4, (sc, ch 4, sc) in the next ch-4 sp (the remaining free point sp of Motif 1); turn—32 (40) ch-4 sps.

**ROW 2 (WS):** Beg hdc in the first sc; 4 hdc in each ch-4 sp across; hdc in the last sc; turn—130 (162) hdc.

**ROW 3:** Beg hdc, hdc through the front loop only in each stitch to the last stitch; hdc in both loops of the last hdc; turn.

**ROWS 4-7:** Repeat Row 3 4 times, then fasten off.

Weave in the ends, and block.